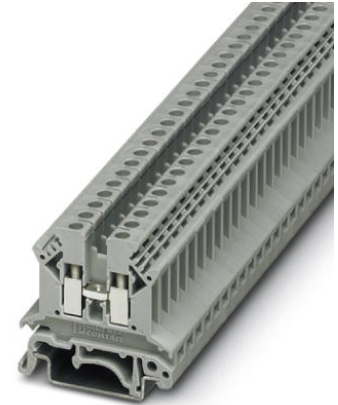


## UK 2,5 B

Order No.: 3001035



<http://eshop.phoenixcontact.de/phoenix/treeViewClick.do?UID=3001035>

Universal terminal block with screw connection, cross section: 0.2 - 2.5 mm<sup>2</sup>, AWG: 30 - 12, width: 6.2 mm, color: gray

### Commercial data

EAN	4017918089788
Pack	50 Pcs.
Customs tariff	85369010
Weight/Piece	0.008005 KG

### Product notes

WEEE/RoHS-compliant since:  
01/01/2003



<http://>

[www.download.phoenixcontact.com](http://www.download.phoenixcontact.com)

Please note that the data given here has been taken from the online catalog. For comprehensive information and data, please refer to the user documentation. The General Terms and Conditions of Use apply to Internet downloads.

### Certificates / Approvals

Approval logo



**CSA**

Nominal voltage $U_N$	600 V
Nominal current $I_N$	25 A
AWG/kcmil	28-12

**CUL**

Nominal voltage $U_N$	600 V
Nominal current $I_N$	20 A
AWG/kcmil	30-12

**UL**

Nominal voltage $U_N$	600 V
Nominal current $I_N$	20 A
AWG/kcmil	30-12
Certification	BV, CSA, CUL, GOST, KEMA, KR, LR, RS, UL

**Accessories**

Item	Designation	Description
<b>Assembly</b>		
3003224	ATP-UK	Separating plate, for visual and electrical separation of terminal groups, width: 1.5 mm, color: Gray
3022218	CLIPFIX 35	Snap-on end bracket, for 35 mm NS 35/7.5 or NS 35/15 mounting rail, can be fitted with Zack strip ZB 8 and ZB 8/27, terminal strip marker KLM 2 and KLM, width: 9.5 mm, color: gray
3001022	D-UK 2,5	Cover, width: 1.5 mm, color: gray
3001103	D-UK 2,5 BU	Cover, width: 1.5 mm, color: blue
1201442	E/UK	End clamp, for supporting the electronic base. If mounted vertically, 2 end clamps are required in each case
0201595	FB-150 METER	Cross connection rail, for fixed bridging of identical inputs and outputs, made of Cu, nickel-plated, 1 m long
1201028	NS 32 AL UNPERF 2000MM	G rail 32 mm (NS 32)
1201002	NS 32 PERF 2000MM	G-profile DIN rail, material: Steel, perforated, height 15 mm, width 32 mm, length 2 m
1201015	NS 32 UNPERF 2000MM	G-profile DIN rail, material: Steel, unperforated, height 15 mm, width 32 mm, length 2 m
0801733	NS 35/ 7,5 PERF 2000MM	DIN rail, material: Steel, perforated, height 7.5 mm, width 35 mm, length: 2 m
0801681	NS 35/ 7,5 UNPERF 2000MM	DIN rail, material: Steel, unperforated, height 7.5 mm, width 35 mm, length: 2 m

1201756	NS 35/15 AL UNPERF 2000MM	DIN rail, deep-drawn, high profile, unperforated, 1.5 mm thick, material: Aluminum, height 15 mm, width 35 mm, length 2 m
2770215	TS-KK 3	Separating plate, for electrical separation of neighboring bridges, can be fitted later, no loss of pitch, color: Gray
0200017	ZSR-EX	Distance piece, metal, for branches of FB-150, with screw and thrust washer

**Bridges**

0201155	EB 2- 6	Insertion bridge, 2-pos., fully insulated
0201142	EB 3- 6	Insertion bridge, 3-pos., fully insulated
0201139	EB 10- 6	Insertion bridge, 10-pos., divisible, fully insulated
0201456	FB 2- 6-EX	Fixed bridge, for cross connections, with screws, screw heads without insulation, 2-pos.
0201469	FB 3- 6-EX	Fixed bridge, 3-pos.
0201029	FB 5- 6	Fixed bridge, for cross connections, with screws, screw heads without insulation, 5-pos.
0201184	FB 10- 6	Fixed bridge, 10-pos., divisible, with screws, screw heads without insulation
0201281	FB 10- 6-EX	Fixed bridge, 10-pos.
0201524	FB 100- 6	Fixed bridge, 100-pos.
0203250	FBI 10- 6	Fixed bridge, 10-pos., screw heads with insulating collar, divisible, with screws
0201650	FBI 100- 6	Fixed bridge, 100-pos.
0201867	FBI 20- 6	Fixed bridge, 20-pos.
1302338	IS-K 4	Bridge bar isolator, as distance piece
0301505	ISSBI 10- 6	Isolator bridge bar, 10-position, divisible, with screws, for switchable branches
0201485	KB- 6-EX	Chain bridge, across any number of terminal blocks, 1-pos., with screw
0202280	LB 10-6 BU	L-bridge, 10-position, screw with blue insulation material
0202358	LB 10-6 GY	L-bridge, 10-position, screw with gray insulation material
1413230	SBRN 2-7	Switching bridge, 2-pos.
2303239	USBR 2-7	Switching bridge, 2-pos.
2305538	USBRJ 2-7	Switching bridge, for bridged terminal groups, 2-pos.

**Marking**

1004115	WS 3- 6	Warning plate, with 2 plastic screws, across 3 terminal blocks, pitch 6 mm
1004209	WS 4- 6	Warning plate, with 2 plastic screws, across 4 terminal blocks, pitch 6 mm

1004403	WS 5- 6	Warning plate, with 2 plastic screws, across 5 terminal blocks, pitch 6 mm
1050499	ZB 6:SO/CMS	Zack strip, 10-section, divisible, special printing, marking according to customer requirements
<b>Plug/Adapter</b>		
0309523	KSS 3- 6	Short circuit connector, for short circuiting neighboring terminal blocks, can only be used with PSB or PSBJ, 3-pos., pitch: 6.2 mm, color: Black
0301547	KSS 6	Short circuit connector, for short circuiting neighboring terminal blocks, can only be used with PSB or PSBJ, 2-pos., pitch: 6.2 mm, color: Black
3001132	PS-UK 2,5 B/E	Individual test plug, 5 mm wide, 1-pos., can be aligned as desired
3001239	PS-UK 2,5 B/Z-6	Modular test plug, 6.2 mm wide, set of 10 with locking latch and connecting pin, interlockable as desired
0601292	PSB 3/10/4	Test plug socket, not insulated, length: 10 mm, screw thread width: 3 mm, socket width: 4 mm
0201304	PSBJ 3/13/4	Test plug socket, insulated, length: 13 mm, screw thread width: 3 mm, socket width: 4 mm, insulation material transparent
0201647	RPS	Reducing plug, for transition from 4 mm diameter test plug socket, insulation: gray

**Address**

PHOENIX CONTACT GmbH & Co. KG  
Flachsmarktstr. 8  
32825 Blomberg, Germany  
Phone +49 5235 3 00  
Fax +49 5235 3 41200  
<http://www.phoenixcontact.de>



© 2008 Phoenix Contact  
Technical modifications reserved;